

	PETROL 95 ULP	PETROL 93 ULP & LRP	DIESEL 0.05%	DIESEL 0.005%	ILL. PAR.
GAUTENG PUMP PRICE (SA c/l) AS FROM 05/08/2020	1,517.000	1,488.000	-	-	-
WHOLESALE PRICE (SA c/l) AS FROM 05/08/2020	-	-	1,348.560	1,352.960	742.828
SINGLE NATIONAL MAXIMUM RETAIL PRICE	-	-	-	-	934.000
BASIC FUEL PRICE - 05/08/2020 (SA c/l)	557.240	545.907	586.551	591.494	527.008
PRESS RELEASE CONTRIBUTION TO BFP 05/08/2020 - 05/08/2020 (SA c/l)	569.770	550.770	597.630	602.030	538.128
UNIT OVER/(UNDER) RECOVERY - 05/08/2020 (SA c/l)	12.530	4.863	11.079	10.536	11.120
AVERAGE BASIC FUEL PRICE 31/07/2020 - 05/08/2020	535.858	526.575	574.520	578.770	512.444
AVERAGE UNIT OVER/(UNDER) RECOVERY 31/07/2020 - 05/08/2020	30.163	20.445	(10.640)	(10.490)	(3.566)

ANALYSIS MOVEMENT OF AVERAGE OVER/(UNDER) RECOVERY

- MOVEMENT IN INTERNATIONAL PRODUCT PRICES

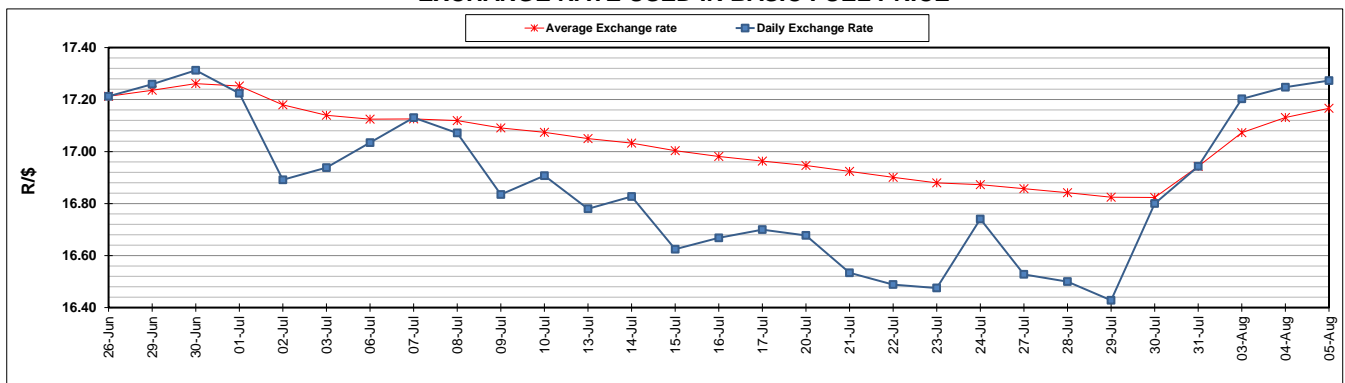
- MOVEMENT IN EXCHANGE RATE

AVERAGE UNIT OVER/(UNDER) RECOVERY 31/07/2020 - 05/08/2020

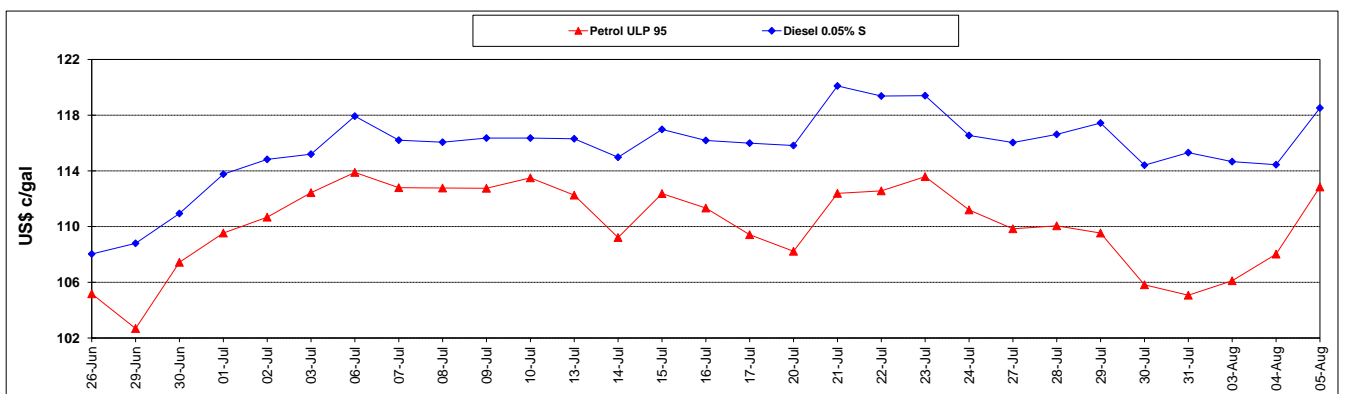
	PETROL 95	PETROL 93	DIESEL 0.05%	DIESEL 0.005%	ILL. PAR.
- MOVEMENT IN INTERNATIONAL PRODUCT PRICES	40.872	30.969	0.843	1.078	6.676
- MOVEMENT IN EXCHANGE RATE	(10.710)	(10.524)	(11.483)	(11.568)	(10.242)
AVERAGE UNIT OVER/(UNDER) RECOVERY 31/07/2020 - 05/08/2020	30.163	20.445	(10.640)	(10.490)	(3.566)

R/\$ EXCHANGE RATE - (R/\$17.2730 - 05/08/2020)

EXCHANGE RATE USED IN BASIC FUEL PRICE



INTERNATIONAL PRODUCT PRICES OF BASKET USED IN BASIC FUEL PRICE



BASIC FUEL PRICE IN SA CENTS PER LITRE

